

OTDR700

Optical Time Domain Reflectometer



Intelligent and High Integrated Instrument with SmartView Design

The OTDR 700 Series is an advanced instrument for troubleshooting, measuring and recording status of fiber-optic networks. The high resolution and narrow event dead-zone enable fiber-optic status in installation, operation and maintenance to be analyzed comprehensively and precisely. The feature of built-in power meter, light source, loss meter and VFL (optional) makes it a truly multipurpose and ideal instrument for fiber-optic-related measurement.

The OTDR 700 Series utilizes one-touch automatic measurement which can avoid test setup errors and smart view in the linear way which simplifies results interpretation. The distance of each event, total loss, total return loss and Pass/Fail result will be directly indicated. These test results can also be stored and converted to PC for copy and saving as the record for future reference.

The OTDR 700 Series offers on-site technicians the most outstanding performance and incredible experience.

Benefits

- 5 fiber-optic test functions in one unit (OTDR, Power meter, Light source, Loss meter, VFL)
- Event dead zone less than 1.5m & Attenuation dead zone less than 4.5m
- Up to 256000 sampling points
- Multiple-wavelength for single-mode
- One-button operation
- Automatic Pass/Fail analysis
- Made in Taiwan

Application

- Construction, deployment and maintenance of FTTH
- CATV network testing
- Metro network testing

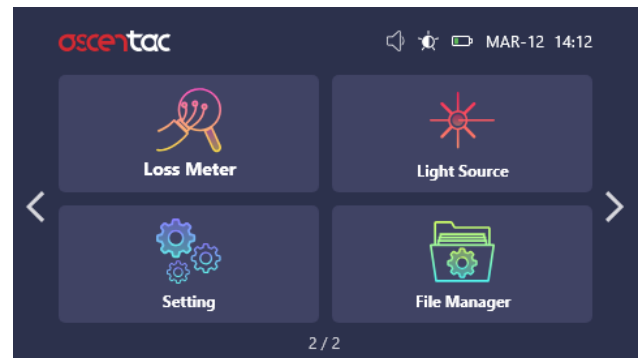
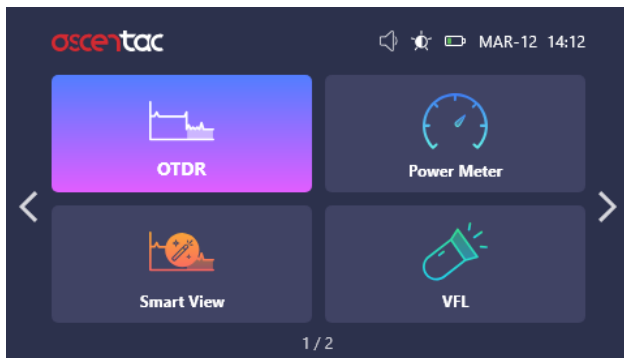
Description

- ① Portable & lightweight
- ② Power status indicator
- ③ Laser-on indicator
- ④ One-touch automatic measurement
Intuitive interface for easy use
- ⑤ Shatter-resistant sleeve & IPx3 (Protected against spraying water)
- ⑥ Outdoor-enhanced 4.3 inch TFT color touch LCD with backlight function (Comfortable to read display for any abominable environments)



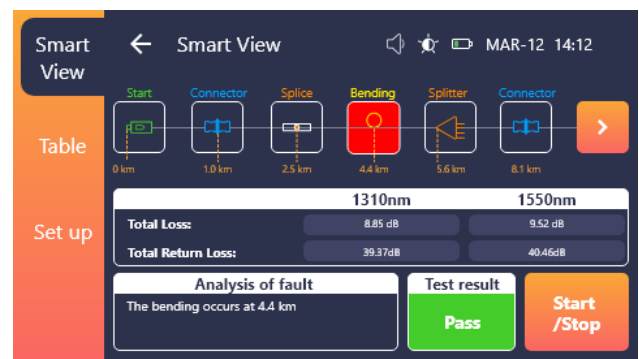
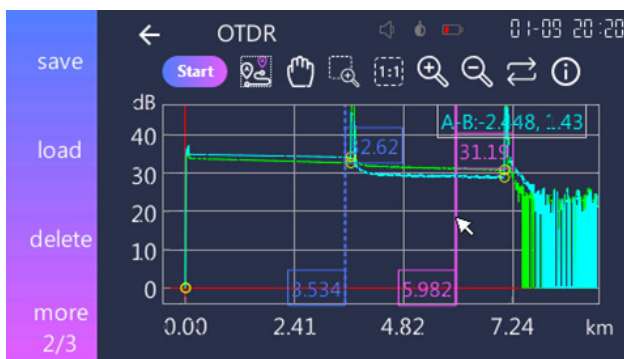
Multifunction

The OTDR 700 Series is a highly integrated instrument. It combines all essential fiber testers (OTDR, Power meter, Light source, Loss meter, VFL) in one set. The minimum investment makes the maximum value.



SmartView Design

The OTDR 700 Series not only has the traditional OTDR trace but also makes measured results displayed in icons. Technicians can assess the status of the fiber-optic cable in the easiest and quickest way.



What is an OTDR?

OTDR, short for optical time domain reflectometer, is designed for testing the performance of newly installed fiber-optic links and detecting problems that may exist.

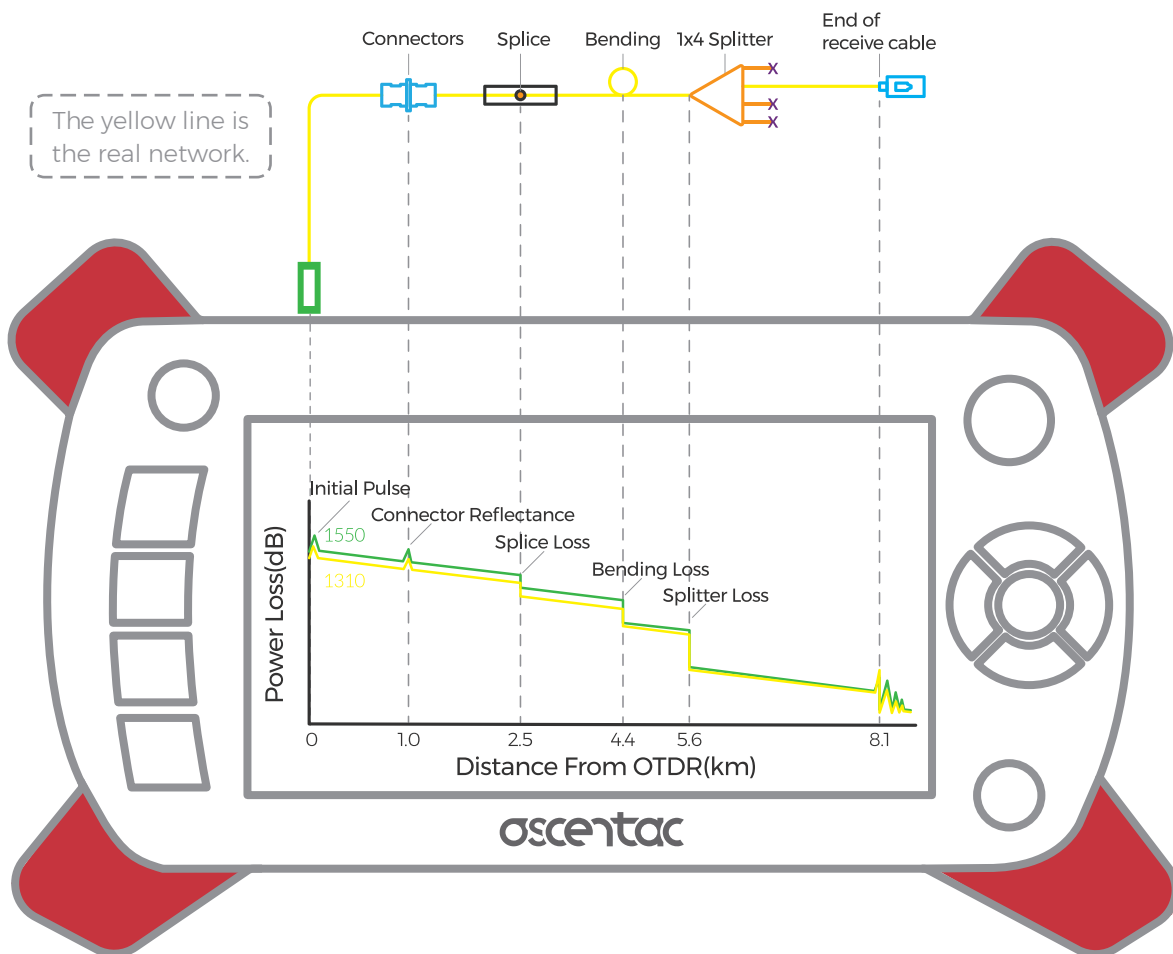
It can calculate the fiber length & attenuation and locate faults. It is an excellent instrument for troubleshooting and fault locating.

How does an OTDR work?

OTDR will send an optical pulse down the fiber and produce a “trace” (a graph of optical power in dB versus the length of the fiber) based on the return signal to present the measurement of the fiber.

The trace can be stored for reference. Comparisons can be made between the original trace and later trace if problems arise.

OTDR Trace Based on the Real Network



Specification

OTDR Specification

Wavelength (nm)	1310 ± 20	1550 ± 20	1625 ± 5	1310 ± 20 & 1550 ± 20	1310 ± 20 & 1625 ± 5	1550 ± 20 & 1625 ± 5
Dynamic Range (dB)	33	31	31	30/28	30/28	28/28
Pulse Width (ns)	5 to 20000					
Event Dead Zone (m)	< 1.5					
Attenuation Dead Zone (m)	< 4.5					
Testing Distance (km)	0.1 to 260					
Sampling Points (Points)	256000					
Distance Accuracy (m)	± (1 + 0.003 % x distance + sampling resolution)					
Optical Connector	SC/PC					

OPM Specification

Power Range (dBm)	0 to -60
Accuracy (dB)	± 0.3
Resolution (dB)	0.01
Wavelength Range (nm)	1310, 1490, 1550, 1625
Optical Connector	SC/UPC

OLS Specification

Central Wavelength (nm)	1310±20 1550±20 1625±5	1310±20 & 1550±20 1310±20 & 1625±5 1550±20 & 1625±5
Output Power (dBm)	-4	-7
Stability (dB)	± 0.5	
Optical Connector	SC/PC	

VFL Specification (Optional)

Wavelength (nm)	650±10 (Visible)
Output Power (mW)	> 2
Modulation Output	CW(Continuous Wavelength), 1Hz, 2Hz
Optical Connector	Universal 2.5mm

Display

4.3 inch ultra-bright TFT color touch LCD with backlight function

Power Supply

DC Input Voltage (V/Amp)	5.0 / 4.0
Battery Life (hours)(with backlight)	> 6

Environment

Working Temperature (°C)	0 to +50
Storage Temperature (°C)	-20 to +60
Relative Humidity	5% to 95%, Non-condensing

Dimensions and Weight

Size (H x W x D) (mm)	220 x 125 x 72
Weight (g) (batteries included)	850

Others

Interface	1. Type-A USB 2. Mini USB 3. 10/100Mbps Ethernet RJ-45
Ingress Protection	IPx3

Standard Accessories

Main unit, Lithium battery, Power adapter, Power cord, Strap, Cleaning stick (10 pcs), Patch cord (SC/PC) , Carrying case, One-year warranty

Ordering Information

OTDR 7XX- OXX- 00- 00

Model ○

713 : 1310nm
715 : 1550nm
716 : 1625nm
721 : 1310nm & 1550nm
722 : 1310nm & 1625nm
723 : 1550nm & 1625nm

Example: OTDR 713-001-00-00

○ **Opt. Video Scope**

0 : w/o Video Scope
1 : w/ Video Scope

○ **Opt. Power Meter**

0 : w/o Power Meter
1 : w/ Power Meter

