



Ascentac OLS200 Series, Optical Light Source, provides highly stable output power. It is available in a choice of wavelength, including 850nm & 1300nm for multi-mode and 1310nm, 1490nm, 1550nm & 1625nm for single-mode. Customers can select two wavelengths at most in one unit. Its tone generation includes CW(Continuous Wave) and modulated tones at 270Hz, 1kHz, 2kHz.

Optical Light Source

Ascentac OLS200

Excellent Stability and Portability for Output Power

Feature

- Two wavelengths at most in one unit
- CW(Continuous Wave) or modulated tones at 270Hz, 1kHz or 2kHz
- Auto shutdown & backlight sleep mode for extending the battery life (Programmable)
- Option: Function of Visual Fault Locator with CW (Continuous Wavelength) or modulated tones at 1Hz or 2Hz

Application

- Fiber identification
- Performing with Optical Power Meter to measure the loss of optical fiber

Description

Ascentac OLS200 Series can be used in conjunction with Ascentac OPM120 Series to provide accurate optical loss measurements. It enables Ascentac OPM120 Series to automatically switch to the proper calibration parameter. The feature reduces the time for communication between two technicians and decreases the possibility of errors.

Ascentac OLS200 Series with low battery indicator can be powered by both dry batteries or rechargeable batteries. It also has functions of auto shutdown and backlight sleep mode to extend the battery running time.

Description

- 1 2.4 inch ultra-bright TFT color LCD with backlight function (Comfortable and easy to read display for darker operation)
- 2 Laser-on status with LED indicator
- 3 Hole to attach strap for hands-free
- 4 Built-in universal 2.5mm tip sleeve Option: 2.5mm universal connector male to FC / SC / LC female adapter

Ø 2.5 connector
male to FC female
adapter



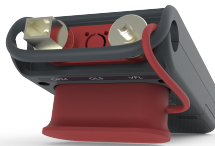
Ø 2.5 connector
male to SC female
adapter



Ø 2.5 connector
male to LC female
adapter



- 5 Dust cap for protecting optical interface plus as a stand for hands-free

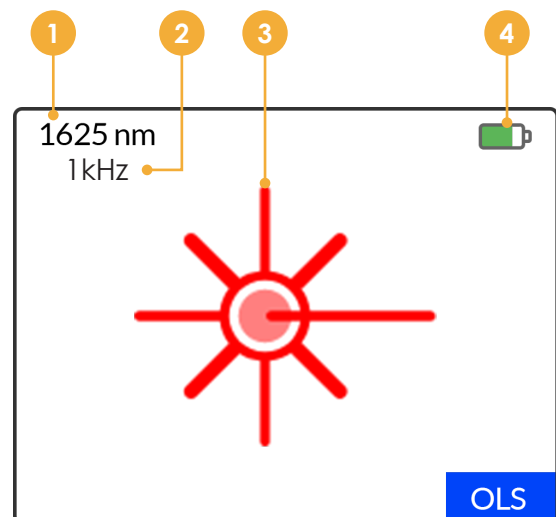


- 6 Friendly interface for easy use
- 7 4 AAA-size dry batteries (Easily obtained) or rechargeable batteries charged by USB (Reduce the operational cost)



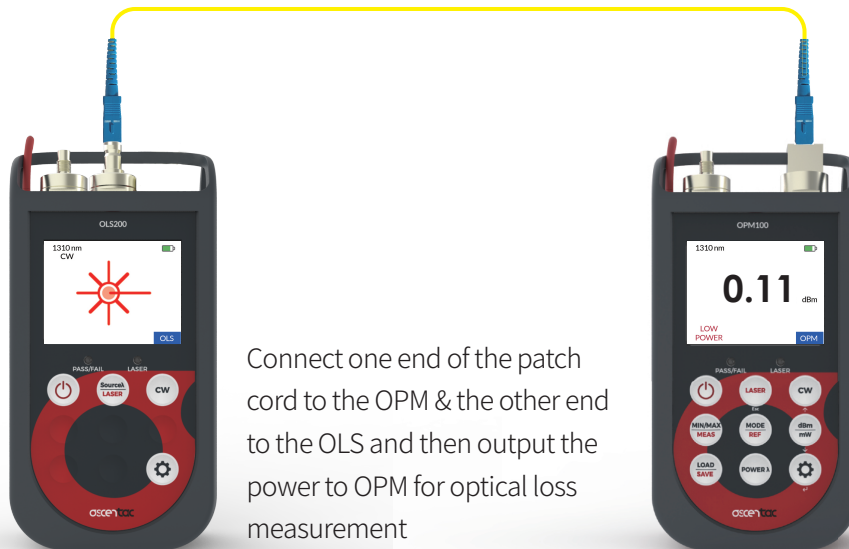
Measurement Display

- 1 Wavelength (850nm, 1300nm, 1310nm, 1490nm, 1550nm, 1625nm) (Option, 2 wavelengths at most)
- 2 Modulation (CW、270Hz、1kHz、2kHz)
- 3 Laser-on status
- 4 Battery status (Low battery indicator to remind users of replacing batteries)



When to Use OLS200

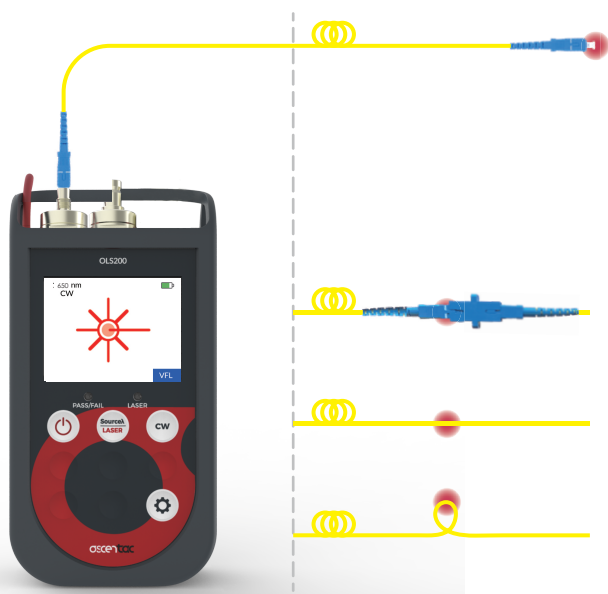
Performing with Optical Power Meter to measure the loss of optical fiber



OLS

OPM

When to Use Built-in VFL in OLS200



1. Fiber identification & End-to-end continuity tests

2. Troubleshooting

Red illumination indicating fiber damages, bends or breaks

- Fiber connector not properly attached
- Broken fibers inside
- Bending

Specification

Specification						
Central Wavelength (nm)	850 (± 30)	1300 (± 50)	1310 (± 20)	1490 (± 20)	1550 (± 20)	1625 (± 5)
Spectral Width (nm)	≤ 5					
Type of Laser Source	FP-Laser					
Output Power (dBm)	≥ 0 (Single wavelength) ≥ -4 (Dual wavelength) * For dual wavelength, both wavelengths are required to be same mode (Either two wavelengths are multimode or two wavelengths are single-mode).					
Stability (dB)	± 0.02 (15 mins, short term)					
	± 0.2 (8 hours, long term)					
Modulation Output	CW(Continuous Wavelength), 270Hz, 1kHz, 2kHz					
Resolution (dB)	0.01					
Optical Connector	Built-in universal 2.5mm tip sleeve Option: 2.5mm universal connector male to FC / SC / LC female adapter					

VFL Specification (Option)	
Wavelength (nm)	650 ± 10 (Visible)
Output Power (mW)	1, 10, 30 or 50 (Option)
Modulation Output	C W (C o n t i n u o u s Wavelength), 1Hz, 2Hz
Distance (km)	> 5
Optical Connector	Universal 2.5mm

Display

2.4 inch ultra-bright TFT color LCD with backlight function

Power Supply

Dry batteries or rechargeable batteries (Charged by USB connection): AAA-size x 4

Battery Life (hours) (with backlight-LOW) (emitting light)	> 18
Battery Charging Time (hour)	< 2

Environment

Working Temperature (° C)	-10 to +60
Storage Temperature (° C)	-30 to +70
Relative Humidity (%)	5 to 95, Non-condensing

Dimensions and Weight

Size (H x W x D) (mm)	150 x 75 x 30
Weight (g) (batteries included)	Approximately 250

Standard Accessories

儀 Main unit, AAA Battery 4pcs, Carrying bag, Shoulder strap, One-year warranty

Ordering Information

OLS 01-002 **XX**

Central Wavelength & Output Power

- 01 : 850nm , ≥ 0dBm
- 02 : 1300nm , ≥ 0dBm
- 03 : 1310nm , ≥ 0dBm
- 04 : 1490nm , ≥ 0dBm
- 05 : 1550nm , ≥ 0dBm
- 06 : 1625nm , ≥ 0dBm
- 21 : 850nm & 1300nm , ≥ -4dBm
- 22 : 1310nm & 1490nm , ≥ -4dBm
- 23 : 1310nm & 1550nm , ≥ -4dBm
- 24 : 1310nm & 1625nm , ≥ -4dBm
- 25 : 1490nm & 1550nm , ≥ -4dBm
- 26 : 1490nm & 1625nm , ≥ -4dBm
- 27 : 1550nm & 1625nm , ≥ -4dBm

Note : 1. OLS with built-in universal 2.5mm tip sleeve.

Option

Visual Function Locator (VFL)

A1-01104	1mW, Built-in Universal 2.5mm Tip Sleeve
A1-01204	10mW, Built-in Universal 2.5mm Tip Sleeve
A1-01304	30mW, Built-in Universal 2.5mm Tip Sleeve
A1-01404	50mW, Built-in Universal 2.5mm Tip Sleeve

Adaptor for OLS

A0-00121	2.5mm Universal Connector Male to FC Female Adapter
A0-00122	2.5mm Universal Connector Male to SC Female Adapter
A0-00123	2.5mm Universal Connector Male to LC Female Adapter

USB Power Adapter

A0-00201	USB Power Adapter, US Plug
A0-00202	USB Power Adapter, EU Plug
A0-00203	USB Power Adapter, UK Plug
A0-00204	USB Power Adapter, AU Plug

USB Cable

A0-00301	Micro USB to USB-A
----------	--------------------

Fiber-optic Patch Cord

A0-00601	Single Mode 9/125--SC/UPC to SC/UPC--2m
A0-00602	Single Mode 9/125--SC/UPC to LC/UPC--2m
A0-00603	Single Mode 9/125--SC/UPC to ST/UPC--2m
A0-00604	Single Mode 9/125--SC/APC to SC/UPC--2m
A0-00605	Single Mode 9/125--SC/APC to LC/UPC--2m
A0-00606	Single Mode 9/125--SC/APC to SC/APC--2m
A0-00607	Single Mode 9/125--FC/UPC to FC/UPC--2m

Adapter Cleaning Sticks - 100 pcs/box

02-0A110	1.25mm without ESD (Electro-Static Discharge)
02-0A120	2.5mm without ESD (Electro-Static Discharge)
02-0B110	1.25mm with ESD (Electro-Static Discharge)
02-0B120	2.5mm with ESD (Electro-Static Discharge)

Fiber Cleaner - 400 wipes/pc

02-00411	Reusable Fiber Cleaner--1 slot
02-00412	Reusable Fiber Cleaner--2 slots
02-00421	Cartridge--1 slot
02-00422	Cartridge--2 slots

Replacement Parts

A0-00001	Battery Cover Cap
----------	-------------------

Example : OLS 01-00201

Option: A1-01104, A0-00121, A0-00201, A0-00301



© Copyright 2025 Ascentac. All rights reserved. The information in this document is subject to change without notice.

For the latest information regarding this product, please visit our website at <http://www.ascentac.com>



Contact us